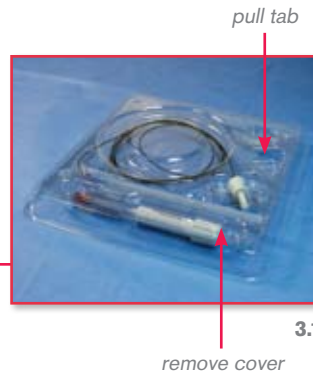


iTrack™ 250A

Canaloplasty Microcatheter In-service Guide

1. Remove the iTrack™ 250A Canaloplasty Microcatheter pouch from the box.
2. Transfer the product to a sterile area.
3. Remove the tray lid and the Ophthalmic Viscolnjector™ Dispenser cover.
4. Remove the Viscolnjector™ from the tray.



5. Prepare the Viscolnjector™.
 - a. Remove the red cap.
 - b. Unscrew the injector body.
 - c. Insert a viscoelastic cartridge.
 - d. Reassemble the injector body.
 - e. Turn the injector knob to express viscoelastic.



6. Remove the iTrack™ 250A Canaloplasty Microcatheter.

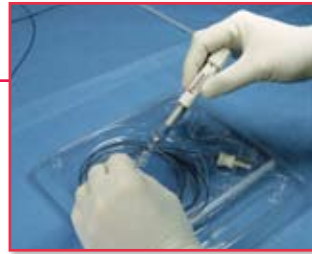


7. Remove the cover tube.



8. Prepare the iTrack™ 250A Canaloplasty Microcatheter.

- a. Remove the infusion line from the tray and attach the ViscolInjector™.
- b. Remove the fiberoptic line from the tray and insert the fiberoptic connector in the iLumin™.
- c. Wet the microcatheter tip.



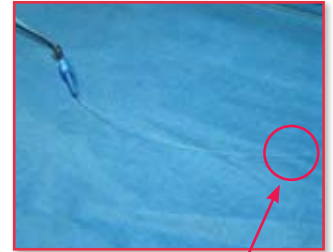
8a



8b



8b



8c

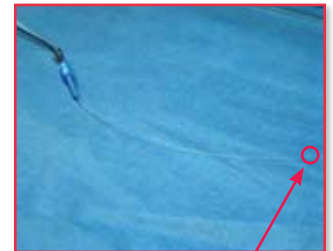
wet the tip

9. Prime the iTrack™ 250A Canaloplasty Microcatheter.

- a. Turn the knob five full turns and wait 5–10 seconds.
- b. Make a half turn and wait another 5–10 seconds. Repeat until viscoelastic flows from the tip.



9a



9b

viscoelastic flow

NOTE:

- Each click is a 1/8 turn.
- Half and full turns are indicated by black and red lines on the ViscolInjector™, respectively.



half turn



full turn

- 10. The iTrack™ 250A Canaloplasty Microcatheter may be placed in the packaging tray and the well filled with BSS to keep the microcatheter wet.**



well filled with BSS

10

iScience
Interventional™

Explore. Illuminate. Deliver.™

Indications for Use: The iScience Interventional Canaloplasty Microcatheter is indicated for fluid infusion and aspiration during surgery.

The iScience Interventional Canaloplasty Microcatheter is indicated for catheterization and viscodilatation of Schlemm's canal to reduce intraocular pressure in adult patients with open-angle glaucoma. FDA Cleared. 510(k) # K080067
iTrack and iLumin patents pending. iTrack, iLumin, Viscolinjector, Explore, Illuminate, Deliver, iScience Interventional, and the iScience Interventional logo are trademarks of iScience Interventional, Inc. ISC-0064 500362-MKT01 Rev B